



EXCURSIONS MENU Adventure Program





Requires a good level of fitness. Designed for those guests who like the challenge of an adventure. Visiting unique places, where nature is abundant and wild.

SERRANO KAYAKING

Minimum age 15 years / Maximum age 65 years

Full day | 8 Hours | Medium / high difficulty

We depart from the hotel heading to Villa Serrano, located 50 miles from Puerto Natales, where specialized kayak guides will be waiting to meet us and give the pre-excursion instructions before paddling down Grey River; one of the most beautiful sceneries in Torres del Paine. The adventure begins at the shore of the river, where you are able to see the northwest side of the Paine Massif, and the southern Ice Field entrance. This excursion is highly recommended to lovers of the outdoors and nautical activities. An unforgettable experience is guaranteed.



HORSEBACK RIDE IN A PATAGONIAN FIELD

Half day | 5 Hours | Low / medium difficulty

Heading out from Remota, it takes about a 30-minute drive to get to a traditional Patagonian ranch (estancia). We will be received by a 'Gaucho' (Cowboy) who will take you on a ride through the Patagonian landscape, where you will see magnificent views of cliffs sculpted by glaciers and natural rock viewpoints, formed by wind erosion. In this imposing but spectacular environment, we will take a well deserved break to share some 'mate'; a traditional hot tea beverage of Patagonia.

KAYAKING AT EBERHARD FJORD

Half day | 5 Hours | Medium difficulty

We will travel by van just 30 minutes from the Hotel to Puerto Consuelo, where we will paddle to the end of the fjord. Then we will take a break to have a well-deserved and delicious snack before paddling back to Puerto Prat, another relevant place in the history of Puerto Natales at the Eberhard fjord. Our adventure comes to an end here and then we return to the hotel.





ROCK CLIMBING.

Full day | 8 Hours | Medium / High difficulty

Seeing the forest and life of a place from another perspective is one of the advantages of this excursion. Ascending to the top of a rock wall with the support of professional guides and being able to observe valleys, forests, lakes, mountains, and glaciers from the heights of a climbing route is a unique opportunity in Patagonia. It is not necessary to be an expert rock climber; our guides will always provide technical support during the excursion.

CERRO TENERIFEHIKE

Full day | 8 to 10 hours – 1.650 m.s.n.m | High difficulty

The summits of Patagonia are characterized by being technical and having low altitudes compared to the rest of the country. Cerro Tenerife is one of those that offers a unique opportunity to experience the Patagonian landscape. Mountain guides will help you complete this challenging excursion for those of you who feel the need to get out in the wild and do something beyond compare.





MIRADOR DEL TORO (BULL'S VIEWPOINT) / LAZOWEBER

Full day | 8 Hours | Medium difficulty

We will start with a 2 hours tour by van towards the traditional Estancia Lazo, located just at the foot of Paine Massif. The trail is surrounded by Lenga forests displaying a huge variety of flowers during spring and summer. You will see several lakes whose surroundings provide refuge to a variety of different species of birds which are part of the incredible view. The trail finishes in Mirador del Toro (360° panoramic view), one of the best places to appreciate the geographic diversity of the Torres del Paine National Park.



VIEWPOINT LAS TORRES / BASE TOWERS

Full day | 8 Hours | High difficulty

After an hour and a half trip by van we will arrive at Cerro Paine. From there we will start hiking. To reach the Ascencio Valley you will climb to the Paso de los Vientos (Pass of the Wind) to get an amazing view of the pampa, lakes, and Ascencio valley. After that we will retrace the valley, crossing an old Lenga Forest to reach the beginning of a glacial moraine which we will start climbing step by step until we reach the Base Towers. If weather conditions permit you will have a great view of the towers. This without a doubt represents a challenge to anyone that likes hiking.

PINGO VALLEY

Full day | 8 Hours | High difficulty

It will take an hour and a half to reach the beginning of the trail. We'll walk through old forests, meadows and bushland to get to the Salmon Waterfall, walking along the Pingo River bank. The highlight of this excursion is arriving at the impressive Pingo Waterfall, running from the glacier with the same name. Throughout the walk you will spot an array of native birds. We will try our best to find the elusive Southern Deer or Huemul, a unique native and sadly an endangered species that inhabits the depths of the valleys and forests of Torres del Paine National Park.



CERRO CASTILLO HIKE

Full day | 8 Hours | High difficulty

After a 45 minute ride by van we will arrive at Cerro Castillo located in an old estancia called Complejo Torres del Paine, part of the 'Exploiting Society of Tierra del Fuego'. From there we will start our challenge to try and conquer the summit of Cerro Castillo. Here you will enjoy an amazing panoramic view of the province below. One of the most challenging excursions but at the same time rewarding of the Remota experience.

BENÍTEZ HIKE

Full day | 8 Hours | Medium / High difficulty

We will start our walk at the natural monument of the Cueva del Milodón (Cave of the Milodon). From here we will go deep into this area and start climbing to the summit of Cerro Benítez. From the summit you will be able to see Condors and Eagles as well as experience a panoramic view of Lake Sofía and the Patagonian Andes.





FRENCH VALLEY

Only available between November 01 to March 15

Full day | 8 Hours | Medium / High difficulty

We will board Hielos Patagónicos Catamaran in Pudeto .After around 30 minutes navigation on Lake Pehoe we will arrive at Paine Grande. From here we will start our hike toward the valley, surrounding Lake Skottsberg until we get to the Italian Camp. The climb to the viewpoint is sheltered by the Glacier El Francés, El Paine Grande and Los Cuernos, imposing rock formations and the heart of Torres delPaine.



ICE TREKKING.

Minimum age 15 years / Maximum age 65 years

Full day | 8 Hours | High difficulty

We will take the western road to Torres del Paine National Park, where we will enjoy magnificent views of the Patagonian lakes and the Cuernos del Paine. Upon our arrival at Lake Grey, we will board the catamaran heading to the Base Camp where the activity will begin. We will walk on the Grey Glacier, allowing us to embark on an adventure on the ancient ice of the Southern Ice Field. Specialized guides will provide technical training, equipment recognition, and ensure our safety on this adventure.

KAYAKING AMONG THE ICEBERGS OF GREY GLACIER.

Minimum age 15 years / Maximum age 65 years

Full day | 8 Hours | High difficulty

We will take the western route towards Torres del Paine National Park, where we will enjoy magnificent views of the Patagonian lakes and the Cuernos del Paine peaks. Upon our arrival at Grey Lake, we will board the catamaran bound for the Base Camp, where the activity will begin. Specialized guides will provide a technical briefing on the use and safety of the kayak, followed by a paddle among the icebergs and the glacier. After completing the activity, we will board the catamaran again to return to Remota.



Traditional, low-impact activities where you can enjoy a nature experience in Patagonia.

HIKE TO PUERTO NATALES.

Half day | 1 Hour and a half | Low difficulty

To understand how life unfolds in the Last Hope Province, it's necessary to delve into the history of Puerto Natales and its inhabitants: their character, customs, how it was built, among other things. We will visit various points of interest, such as the Fishermen's Wharf, the Municipal Museum, the Main Square, and its surroundings.

THREE CAVES HIKE.

Half day | 5 Hours | Low difficulty

We will visit the Small Cave, the Middle Cave, and the enormous Milodon Cave, home to the giant ground sloth that inhabited these lands over ten thousand years ago. The archaeological and cultural significance of this natural monument extends through the oldest human remains found in the region.

BENÍTEZ TREKKING.

Half day | 5 Hours | Medium difficulty

In this excursion, we will try to reconstruct and relive the settlement of Patagonia, visiting the rock shelters formerly used by the Tehuelche people. Additionally, we will enjoy the perspective of Lake Sofia and the Sierra Senoret Valley.

DAY OF STAY.

Full day | 8 Hours | Low difficulty

We leave Remota to visit the typical ranches of Chilean Patagonia, where the effort and character of the first settlers of these lands can be felt in the shearing sheds, and you can savor a delicious and traditional Patagonian lamb barbecue on a spit.





TORRES DEL PAINE NATIONAL PARK.

Full day | 8 Hours | Low difficulty

The perfect excursion to get an overall and comprehensive view of Torres del Paine National Park. We will visit Torres del Paine from one end to the other. Enjoy different viewpoints such as Laguna Amarga and Lago Nordenskjöld. In addition, we will take short walks to visit Salto Grande, Mirador Cuernos, and Mirador de los Hielos on the beach of Lago Grey. Lunch and entrance fees included.

TORRES DEL PAINE ACTIVE NATIONAL PARK.

Full day | 8 Hours | Low / medium difficulty

Safari fotográfico a través de Torres del Paine. Concentramos nuestro viaje en el lado este del parque, donde se encuentran la mayoría de los animales. Comenzamos con Laguna Azul, lugar visitado por la primera expedición turística de la zona, en la cual participó Lady Florence Dixie, que es también uno de los mejores lugares para ver las Torres. Continuaremos hasta llegar a la Cascada Paine. Más adelante, luego de una caminata de 3 horas, tendremos contacto con los Guanacos de toda la pampa y visitaremos un refugio rocoso donde se encuentran algunos restos de pinturas rupestres indígenas.



BALMACEDA AND SERRANO NAVIGATION.

Full day | 8 Hours | Low difficulty

This journey replicates the one made by the expert Spanish pilot Juan Ladrilleros in 1557 when, with the last hope of finding the Strait of Magellan, he came across the glaciers of Mount Balmaceda. Setting sail from Puerto Natales, we will sail for 3 hours along the Last Hope Inlet towards Mount Balmaceda, located within the Bernardo O'Higgins National Park, the largest in our country. We will arrive at a port within the national park and take a short hike to get closer to the Serrano Glacier. On the way back, we will visit a ranch to enjoy a typical Patagonian lamb barbecue.

GRAY LAKE NAVIGATION.

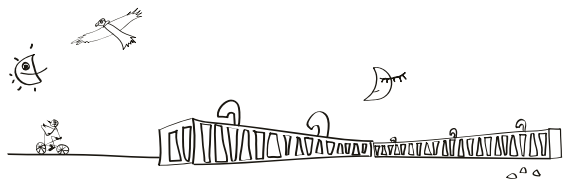
Full day | 8 Hours | Low / medium difficulty

We will depart towards Torres del Paine National Park via the Serrano route, where we will visit the viewpoints of Lake Toro, the Cuernos, and Grey Glacier. We will then head to Lake Grey, where we will embark on a three-hour navigation towards Grey Glacier. You'll have the opportunity to enjoy an unparalleled landscape composed of floating icebergs, lush vegetation, and imposing mountains. From a very short distance, you'll be able to appreciate the beauty and magnitude of the ice walls, which are more than 20 meters high, that the glacier offers as a spectacle.



IMPORTANT

If you have excursion preferences you can inform us in advance. These will be considered by the guide at the moment of the passengers registration. Confirmation is subject to the physical condition of the passenger, ages of children if there are any, weather conditions and availability.



Remota Patagonia Lodge Ruta 9 Norte, km 1.5, Puerto Natales, Chile / Tel. +56 61 2414040
Santiago office Paris 888, piso 7, Santiago, Chile / Tel. +56 2 23871500
reservas@remota.net / www.remota.cl