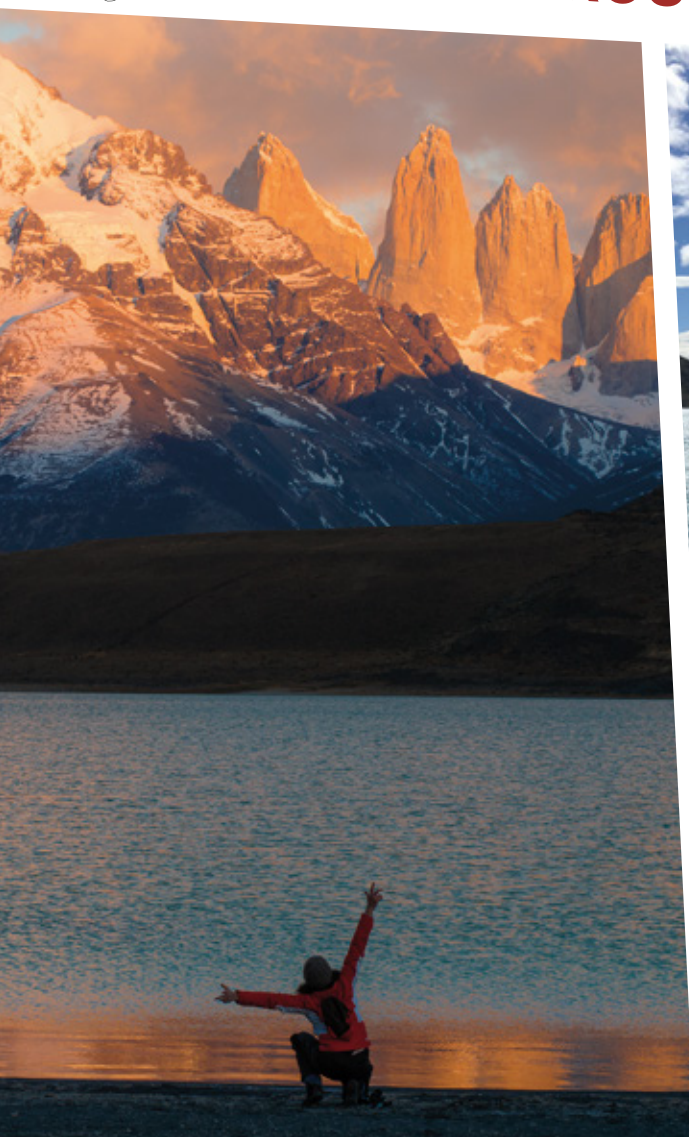




EXCURSION MENU Soft Program



Traditional activities of low physical demand, where you can enjoy the experience of nature in Patagonia.

NEW HORSEBACK RIDE IN A PATAGONIAN FIELD.

Half day | 5 Hours | Low / medium difficulty

Heading out from Remota, it takes about a 30-minute drive to get to a traditional Patagonian ranch (estancia). We will be received by a 'Gaucho' (Cowboy) who will take you on a ride through the Patagonian landscape, where you will see magnificent views of cliffs sculpted by glaciers and natural rock viewpoints, formed by wind erosion. In this imposing but spectacular environment, we will take a well deserved break to share some 'mate'; a traditional hot tea beverage of Patagonia.

PUERTO NATALES WALK.

Half day | 1 Hour and a half | Low difficulty

To experience and understand life in the Province of Última Esperanza (Last Hope) it is important to know the history of Puerto Natales and its inhabitants. Among other things, we will learn about how the city was built, the nature of its people as well as its traditions. You will visit different points of interest such as Fishermen's Dock, the City Council Museum, Main Square and surrounding buildings.



WALK TO THE THREE CAVES.

Half day | 5 Hours | Low difficulty

We will explore Cueva Chica (Small Cave), Cueva del Medio (Medium Cave) and the large Milodon Cave. Milodon is an extinct genus of giant ground sloth that lived in Patagonia until roughly 10,000 years ago. In addition, this is an important archaeological and cultural monument because the earliest human remains of the region were discovered here.

BENÍTEZ TREKKING

Half day | 5 Hours | Medium difficulty

In this excursion we will try to recreate the early settlements of Patagonia and get to know the rocky eaves, used in the old days by the Tehuelche people. We will also enjoy magnificent views of Lake Sofia and the valley of Sierra Señoret.



FIELD DAY IN ESTANCIA

Full day | 8 Hours | Low difficulty

We will depart from Remota to visit a typical Patagonian Estancia where the spirit and character of the first settlers can be felt in the shearing sheds of these far-away lands. We will also enjoy authentic Patagonian lamb roast on a stick.



TORRES DEL PAINE NATIONAL PARK.

Full day | 8 Hours | Low difficulty

This is the perfect excursion to get an overall view of the park. You will see Torres del Paine from one side to the other. You can enjoy all its views, including Amarga Lagoon and Nordenskjöld Lake. We will do short walks to visit Salto Grande, Cuernos lookout and the Icebergs viewpoint, at the Lake Grey beach. Lunch and all entrance fees are included.

ACTIVE FULL DAY TORRES DEL PAINE NATIONAL PARK.

Full day | 8 Hours | Medium / low difficulty

A photographic safari through Torres del Paine. We will concentrate our tour on the eastern side of the park where most of the animals can be found. You will start hiking at the Sarmiento lake entrance and crossing to the Amarga Lagoon entrance. From here we will walk through the Patagonian steppe, habitat of guanacos and pumas where you will be able to see the Paine Massif from a distance. After this you will continue to the Nordenskjöld lake lookout and Pehoe camp. After lunch the next stop is the Paine river waterfall, the main artery of the park, and heart of the hydrologic network in Torres del Paine.

MIRADOR DEL TORO (BULL'S VIEWPOINT) / LAZO WEBER.

Full day | 8 Hours | Medium difficulty

We will start with a 2 hour tour by van towards the traditional Estancia Lazo, located just at the foot of Paine Massif. The trail is surrounded by Lenga forests displaying a huge variety of flowers during spring and summer. You will see several lakes whose surroundings provide refuge to a variety of different species of birds which are part of the incredible view. The trail finishes in Mirador del Toro (360° panoramic view), one of the best places to appreciate the geographic diversity of the Torres del Paine National Park.



BALMACEDA AND SERRANO NAVIGATION.

Full day | 8 Hours | Low difficulty

This crossing will emulate the one made by Spanish skipper Juan Ladrilleros in 1557, when as a last hope of finding the Strait of Magellan he came across with the glaciers of Balmaceda Mount. We will depart from Puerto Natales, sailing for 3 hours through the fjord toward Balmaceda Mount, located at the Bernardo O'Higgins National Park, the biggest in our country. We will dock at the national park, disembark to do a short walk to see the Serrano Glacier. On our return we will visit a estancia to enjoy a typical Patagonian lamb barbecue.

LAKE GREY NAVIGATION.

Full day | 8 Hours | Low difficulty

Departing to Torres del Paine National Park through route Serrano, we will visit the vantage points of Lago del Toro, Los Cuernos and Grey Glacier to continue toward Lake Grey, where we will navigate around the glacier for 3 hours. You will be surrounded by an unrivalled landscape of floating icebergs, lush vegetation and majestic mountains. You will witness up close and personal all the wonder, beauty and magnitude of the ice walls, standing at a height of 20 meters. A true spectacle of nature.



VIEWPOINT LAS TORRES / BASE TOWERS.

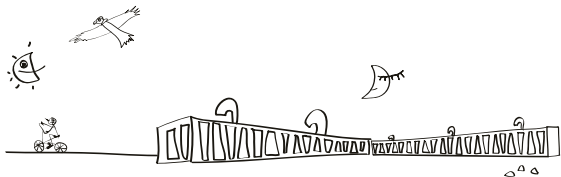
Full day | 8 Hours | High difficulty

After an hour and a half trip by van we will arrive at Cerro Paine. From there we will start hiking. To reach the Ascencio Valley you will climb to the Paso de los Vientos (Pass of the Wind) to get an amazing view of the pampa, lakes, and Ascencio valley. After that we will retrace the valley, crossing an old Lenga Forest to reach the beginning of a glacial moraine which we will start climbing step by step until we reach the Base Towers. If weather conditions permit you will have a great view of the towers. This without a doubt represents a challenge to anyone that likes hiking.



IMPORTANT

If you have excursion preferences you can inform us in advance. These will be considered by the guide at the moment of the passengers registration. Confirmation is subject to the physical condition of the passenger, ages of children if there are any, weather conditions and availability.



Remota Patagonia Lodge Ruta 9 Norte, km 1.5, Puerto Natales, Chile / Tel. +56 61 2414040
Santiago office Paris 888, piso 7, Santiago, Chile / Tel. +56 2 23871500
reservas@remota.net / www.remota.cl