

## EXCURSION MENU

# SOFT PROGRAM.

Connect with Patagonia at your own pace.



SEASON 2025 - 2026

# EXPERIENCE PATAGONIA

WITH TRANQUILITY,  
COMFORT, AND DEPTH.



At **Remota Patagonia Lodge**, we believe discovering Patagonia can be a transformative experience — without the need for physical demands. Our soft excursion programs are designed for those who wish to explore the landscapes of the southernmost part of the world at a slower pace, with attention to detail and a genuine connection with nature.

This is an invitation for those who want to experience the vastness of this territory with calm, well-being, and meaning. Gentle walks, scenic boat rides, and cultural experiences allow you to immerse yourself in the essence of Patagonia — without sacrificing comfort.

**BECAUSE HERE, PATAGONIA IS NOT JUST EXPLORED...**

it is felt.



**SOFT PROGRAM**

## PATAGONIAN HORSEBACK RIDE

TRADITION, NATURE, AND ADVENTURE.

 **HALF-DAY**

 **RIDING TIME: 2.5 HOURS**

 **LOW DIFFICULTY**

We venture south of the province to experience an unforgettable adventure at a traditional Patagonian estancia. Just 30 minutes from Remota, an authentic place awaits us, where tradition and the majesty of the landscape come together at the end of the world.

A true Patagonian gaucho will welcome us with the warmth that characterizes the people of the south, inviting us to discover their customs and unique connection with the land. Then, we will mount one of their noble horses to begin a ride through breathtaking scenery: we will cross the vast Patagonian steppe, venture into Magellanic forests, and enjoy spectacular views of the imposing Última Esperanza Fjord.

Every step of this journey connects us with the wild nature and living culture of Patagonia. At the end, a well-deserved rest awaits us with a traditional snack and a comforting mate, the most beloved drink of southern travelers, shared in both Argentina and Chile.

An invitation to feel Patagonia from its roots. Come ride with us and take home memories that will stay with you forever!

## THREE CAVES ADVENTURE

DISCOVER THE LOST LEGENDS OF PATAGONIA.

 **HALF-DAY**

 **HIKING TIME: 2.5 HOURS / 3.5 KM.**

 **LOW DIFFICULTY**

Exploration of the Cueva del Milodón Natural Monument.

Just a few km from Remota, a site awaits that holds some of Patagonia's best-preserved secrets: the Cueva del Milodón Natural Monument. This group of three caves, nestled on the slopes of Cerro Benítez, holds immense geological, paleontological, and archaeological significance.

The most famous of these caverns is the Cueva del Milodón, where remains were found of one of the Pleistocene's most iconic inhabitants: the milodón, a giant herbivore that roamed this land over 10,000 years ago. But it wasn't only prehistoric animals that left their mark here, early human traces, considered the oldest in the region, have also been discovered, adding to the site's profound cultural and archaeological value.

As we explore the three caves, we'll witness breathtaking landscapes and connect with a natural legacy that bridges present-day Patagonia with its ancient past. It's a unique experience that invites us to imagine a time when giants—both animal and human—roamed this remote corner of the world.

## PETROGLYPH TREK

A JOURNEY THROUGH HISTORY, FORESTS, AND ADVENTURE.

 **HALF-DAY**

 **HIKING TIME: 4 HOURS / 6 KM**

 **MODERATE DIFFICULTY**

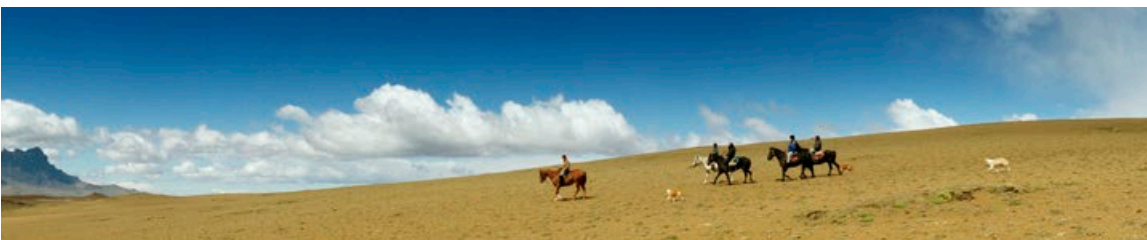
Just 30 minutes from Remota, we embark on an adventure that awakens all the senses. This trek leads us into a stunning natural setting, exploring lush lenga and coigüe forests that envelop us in their silence and freshness.

Along the way, you will uncover an invaluable legacy: the rock engravings left by the Aonikenk culture, ancient inhabitants of these lands. Their petroglyphs tell a profound story, rich in symbolism and a deep connection to nature.

The route takes us to incredible viewpoints offering panoramic vistas and, for the more daring, includes the thrill of navigating rocky passages and exploring millenary caves that seem to belong to another time.

A comprehensive experience: nature, culture, and adventure in its purest form.

Undoubtedly, one of Remota's must-see highlights.





## VISIT THE CITY OF PUERTO NATALES

 **HALF-DAY**

 **2 HOURS**

 **LOW DIFFICULTY**

To discover Puerto Natales is to understand the essence of life in the province of Última Esperanza. Walking through its streets reveals a rhythm guided by tradition, history, and the enduring warmth of its people.

This carefully curated excursion offers both a panoramic drive and a guided walking activity through this charming southern city, where understated architecture and rich local narratives evoke the legacy of early navigators, ranchers, and fishermen.

Our visit includes notable landmarks such as the Fishermen's Wharf, the County Museum, the Main Square Plaza, and the picturesque Señoret Channel waterfront, a place where the views of fjords and mountains appear ever-changing, animated by the wind and light.

More than a city visit, this experience offers a genuine connection to the cultural fabric of Puerto Natales, its traditions, its landscape, and its people, who still preserve the serenity of a bygone era.

An ideal excursion for travelers seeking to engage with the living history of Patagonia and return with meaningful, enduring impressions.

## WALK BETWEEN FJORDS: FROM PUERTO PRAT TO PUERTO CONSUELO

 **HALF-DAY**

 **WALKING TIME: 2 HOURS / 2 KM**

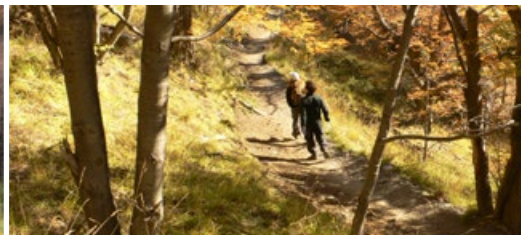
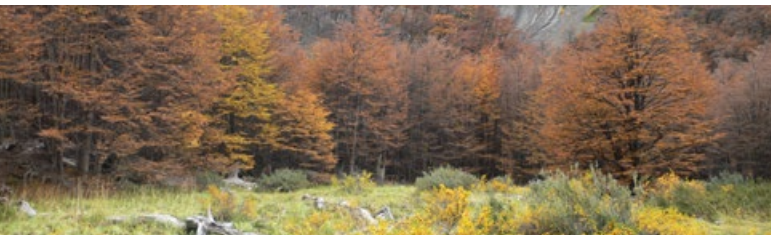
 **LOW DIFFICULTY**

Just 35 minutes north of Remota lies one of Patagonia's most serene and captivating corners: the Eberhard Fjord. This narrow arm of the sea, branching off from the majestic Última Esperanza Fjord, forms a mirror-like waterway connecting two historic ranch ports — Puerto Prat and Puerto Consuelo.

During this gentle and accessible walk, we follow in the footsteps of the region's earliest settlers. The path invites a deep appreciation of the silence of the landscape, the whisper of the Patagonian wind, and the graceful flight of native bird species that inhabit the area.

A simple yet profoundly meaningful experience — perfect for those seeking a quiet connection with local history, pristine nature, and the timeless tranquillity of an extraordinary setting.

SOFT PROGRAM - HALF DAY



## PHOTO SAFARI TORRES DEL PAINE NATIONAL PARK

THE BEST WAY TO DISCOVER THE VASTNESS OF TORRES DEL PAINE.

- 🕒 FULL DAY
- 🕒 8 HOURS
- 🏔️ LOW DIFFICULTY

This excursion offers the perfect introduction to the Torres del Paine National Park, providing a comprehensive and varied overview of its most iconic landscapes. Throughout the day, we'll visit some of the park's most spectacular viewpoints and natural landmarks, allowing you to admire the Paine Massif from multiple angles and in all its splendor.

Our first stops include Laguna Amarga and Lago Nordenskjöld, with striking views of the famous towers and the dramatic scenery that surrounds them. We'll also enjoy short but unforgettable walks to natural wonders such as Salto Grande, Paine Waterfall, Lago Pehoé, and the awe-inspiring Lago Grey.

Beyond its breathtaking vistas, this excursion offers an up-close encounter with the unique flora and fauna of the region. Expect to see guanacos, foxes, flamingos, and, if we're lucky perhaps a soaring Andean condor overhead.

This is a must-do experience, ideal for those beginning their journey in Torres del Paine and seeking a sweeping, unforgettable perspective of Patagonia's most iconic national park.

## ACTIVE ADVENTURE TORRES DEL PAINE NATIONAL PARK

ADVENTURE AWAITS IN TORRES DEL PAINE. DISCOVER THE EIGHTH WONDER OF THE WORLD AT YOUR OWN PACE.

- 🕒 FULL DAY
- 🕒 HIKING TIME: 6 HOURS / 10 KM.
- 🏔️ MODERATE DIFFICULTY

Prepare for an unforgettable journey into the heart of Patagonia. This experience invites you to explore the majestic Torres del Paine National Park like never before, on foot, breathing in the pure mountain air and immersing yourself in nature at its wildest.

We'll venture through two distinct sectors of the park, combining highlights from both the eastern and western regions, to offer a panoramic, in-depth view of the stunning Paine Massif. The day includes two moderate-intensity hikes, perfect for those who love to move, explore, and be awed by landscapes that feel otherworldly.

Surrounded by towering peaks, turquoise lakes, and hidden valleys, you'll also discover the park's geological history and diverse wildlife. Look out for guanacos, foxes, condors, and, if luck is on your side, even a distant glimpse of a puma in its natural habitat.

This experience is ideal for travelers seeking a more active and enriching alternative to a traditional photo safari. Here, you don't just take pictures you feel the park beneath your feet.

## LAZO WEBER: TRAIL OF GRAND VIEWS

A SCENIC AND SURPRISING ROUTE TO THE HEART OF TORRES DEL PAINE.

- 🕒 FULL DAY
- 🕒 HIKING TIME: 5.5 HOURS / 14 KM
- 🏔️ MODERATE DIFFICULTY

Prepare to uncover one of the best-kept secrets of Torres del Paine National Park. Our journey begins with approximately two hours' travel to the traditional Estancia Lazo, a historic Patagonian ranch that serves as the gateway to one of the park's lesser-explored entrances... and the starting point for one of its most magical trails.

The Lazo Weber Trail is a true natural treasure. Along the route, you will be captivated by crystal-clear lagoons, native forests, winding rivers, and a variety of landscapes that change with every step. This trail is beloved not only for its breathtaking scenic beauty but also for the peace and tranquility that permeate the entire journey.

One of its greatest gifts is the panoramic view: from here, you will enjoy a privileged vantage point of the Paine Massif, crowned by a 360° viewpoint overlooking the entire national park. It is a place that invites you to pause, breathe deeply, and simply contemplate the grandeur of Patagonia.

The trail combines gentle undulating paths, vast steppe plains, and a steep moraine ascent at the end, adding a touch of adventure at just the right moment.

Undoubtedly one of the most recommended experiences during your stay at Remota, it is ideal for those seeking to connect with nature from a unique perspective and with far fewer visitors.



## BALMACEDA & SERRANO NAVIGATION

AN ADVENTURE TO THE HEART  
OF THE ICE.

🕒 FULL DAY

🕒 8 HOURS

🚶 LOW DIFFICULTY

Embark on an unforgettable adventure through the waters of the Última Esperanza Fjord, one of Patagonia's most dazzling settings. Aboard a comfortable catamaran, we will follow the ancient routes of explorers such as Juan Ladrillero and Sarmiento de Gamboa, who navigated these waters nearly 500 years ago.

During the cruise, you will witness breathtaking landscapes, rocky outcrops teeming with wildlife, and majestic colonies of Imperial Cormorants. You will also marvel at waterfalls plunging from towering cliffs into the fjord below.

After two hours of sailing, we will arrive at Puerto Toro, the gateway to Bernardo O'Higgins National Park, the largest park in Chile. From here, we will embark on a gentle 30-minute hike through lush Magellanic Coigüe forests, culminating in a face-to-face encounter with the awe-inspiring Serrano Glacier.

On the return journey, we will make a special stop at Estancia Perales, a traditional Patagonian ranch, where a hearty, typical lunch awaits to complete this extraordinary day.

This comprehensive experience combines navigation, stunning landscapes, wildlife, history, and local gastronomy.

Come and discover the glaciers, fjords, and secrets of southern Patagonia.

## PATAGONIAN ESTANCIA

TRADITION, FLAVOR, AND ADVENTURE  
AT THE END OF THE WORLD.

🕒 FULL DAY

🕒 5-6 HOURS

🚶 LOW DIFFICULTY

Prepare for a unique and deeply authentic experience in the heart of Patagonia. We invite you to visit a traditional estancia, where you will be warmly welcomed by the owners themselves, who proudly share their history, land, and way of life in this wild corner of the world.

Here you will gain insight into life and work at the end of the world, learning about customs, trades, and the profound connection between people, animals, and nature. And yes... you will witness the true art of preparing "cordero al palo", the classic culinary ritual that brings families, travelers, and gauchos together alike.

But that's not all. You can explore the pampas on horseback, feeling the freedom of the Patagonian wind on your face as you traverse open, untamed landscapes full of history. Or, if you prefer, simply relax at the estancia, enjoy its cozy corners, and let yourself be enveloped by the tranquility of the place.

And of course... you cannot leave without trying mate, the most beloved herbal infusion of the southern world. It might surprise you at first, but by the second sip, you will feel like a true Patagonian.

Tradition, flavour, landscape, and human connection at its finest.





BALMACEDA & SERRANO NAVIGATION

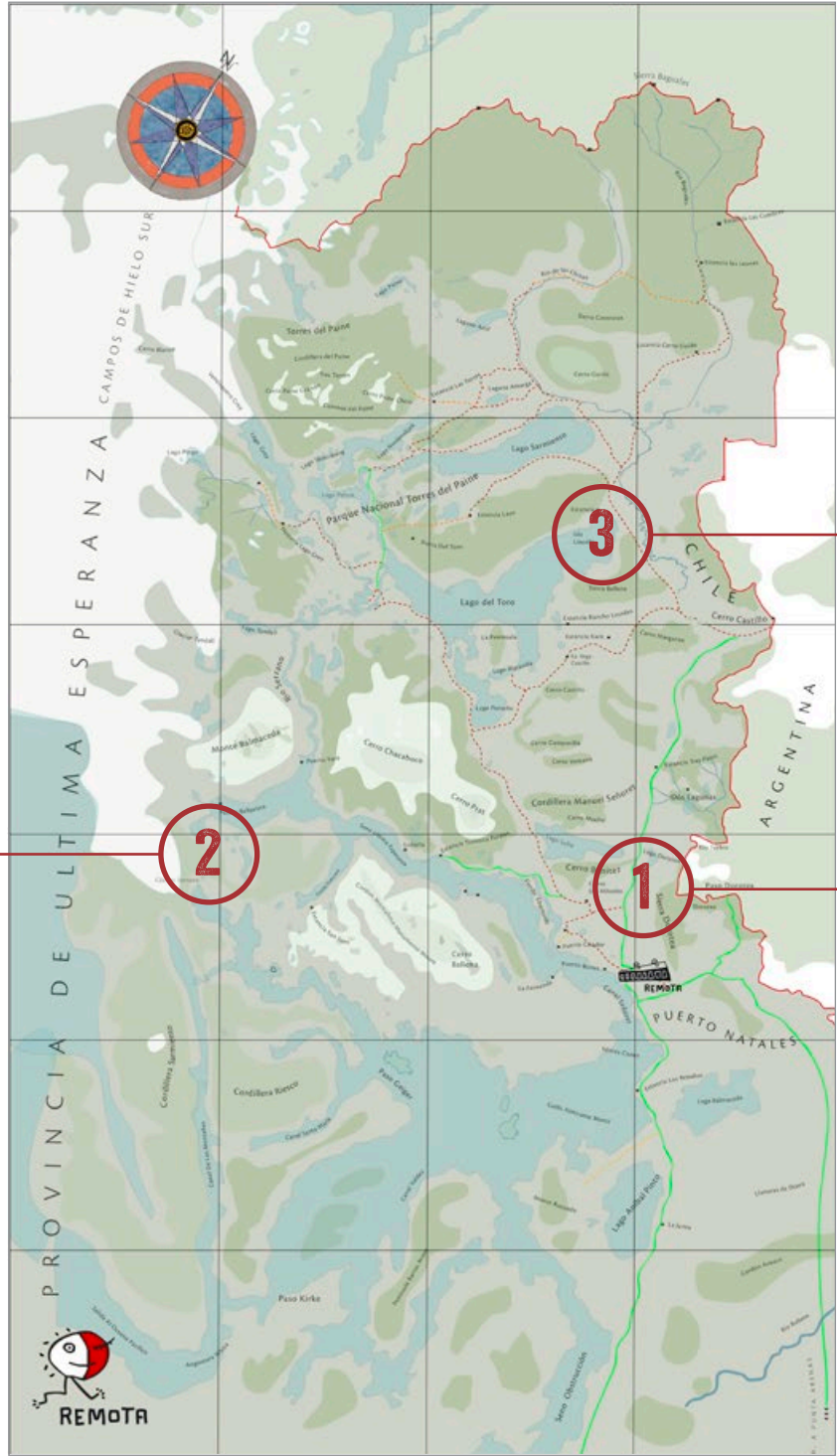


PHOTO SAFARI TORRES DEL PAINE NATIONAL PARK  
ACTIVE ADVENTURE TORRES DEL PAINE NATIONAL PARK  
LAZO WEBER: TRAIL OF GRAND VIEWS

EXCLUSIVE HORSEBACK RIDING EXPERIENCE  
THREE CAVES ADVENTURE  
PETROGLYPH TREK  
VISIT THE CITY OF PUERTO NATALES  
WALK BETWEEN FJORDS:  
FROM PUERTO PRAT TO PUERTO CONSUELO  
PATAGONIAN ESTANCIA

.....  
The safety and comfort of our guests are always our top priority. Therefore, all excursions are subject to weather conditions and may be modified or canceled if the weather does not allow them to take place.  
.....

Excursions are chosen from the options available each day. Confirmation is subject to passengers' physical condition, children's ages (if any), weather, and availability.  
.....



SOFT PROGRAM