



Excursions Menu Adventure Program 2024 - 2025

Bookings: +56 223871500 - sales@remota.net
www.remotahotel.com



RUPESTRE TREKKING **NEW**

Half Day | 4 Hours | Low/Medium Difficulty

Let's enter into the wonderful landscapes that Cerro Benítez, Rupestre sector has prepared for us. Between lengas and ñirres forests, we will be privileged witnesses of the passage of time captured in the majestic conglomerate-type geological formations, as well as one of the few wonderful vestiges that the Aonikenk culture has inherited to these territories.

FERRIER & MONZINO VIEWPOINT **NEW**

Full Day | 6 Hours | Medium Day

Let's get to know the west area of the Torres del Paine National Park in depth. We will carry out walks in two different sectors of the park, the first of them in the pingo sector, from where we will have a 2-hour ascent until we reach the Ferrier viewpoint and we will use the same path for the descent. After this, we will move for around 30 minutes by car to the Villa Monzino area, from where we will take a gentle and comforting walk in the direction of Weber Bridge, having as the main focus a dazzling view of the Cuernos del Paine. We will expand our knowledge of one of the least explored areas of Torres del Paine.

HORSEBACK RIDE IN A PATAGONIAN FIELD

Half day | 5 Hours | Low / medium difficulty

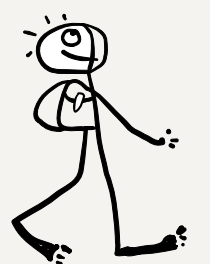
Heading out from Remota, it takes about a 30-minute drive to get to a traditional Patagonian ranch (estancia). We will be received by a 'Gaucha' (Cowboy) who will take you on a ride through the Patagonian landscape, where you will see magnificent views of cliffs sculpted by glaciers and natural rock viewpoints, formed by wind erosion. In this imposing but spectacular environment, we will take a well deserved break to share some 'mate'; a traditional hot tea beverage of Patagonia.

EXCURSIONS MENU

ADVENTURE PROGRAM

Important:

If you have excursion preferences, you can inform them in advance; these will be considered by the guide at the time of passenger registration at Remota. Confirmation of them is subject to: passenger's physical conditions, ages of children if any, weather conditions, and availability.





CERRO TENERIFE HIKE

Full day | 8 to 10 hours – 1.650 m.s.n.m | High difficulty

The summits of Patagonia are characterized by being technical and having low altitudes compared to the rest of the country. Cerro Tenerife is one of those that offers a unique opportunity to experience the Patagonian landscape. Mountain guides will help you complete this challenging excursion for those of you who feel the need to get out in the wild and do something beyond compare.

MIRADOR DEL TORO (BULL'S VIEWPOINT) / LAZO WEBER

Full day | 8 Hours | Medium difficulty

We will start with a 2 hours tour by van towards the traditional Estancia Lazo, located just at the foot of Paine Massif. The trail is surrounded by Lenga forests displaying a huge variety of flowers during spring and summer. You will see several lakes whose surroundings provide refuge to a variety of different species of birds which are part of the incredible view. The trail finishes in Mirador del Toro (360° panoramic view), one of the best places to appreciate the geographic diversity of the Torres del Paine National Park.

VIEWPOINT LAS TORRES / BASE TOWERS

Full day | 8 Hours | High difficulty

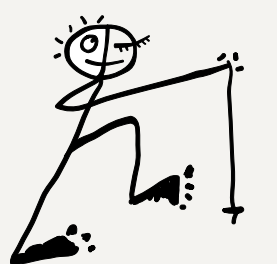
After an hour and a half trip by van we will arrive at Cerro Paine. From there we will start hiking. To reach the Ascencio Valley you will climb to the Paso de los Vientos (Pass of the Wind) to get an amazing view of the pampa, lakes, and Ascencio valley. After that we will retrace the valley, crossing an old Lenga Forest to reach the beginning of a glacial moraine which we will start climbing step by step until we reach the Base Towers. If weather conditions permit you will have a great view of the towers. This without a doubt represents a challenge to anyone that likes hiking.

EXCURSIONS MENU

ADVENTURE PROGRAM

Important:

If you have excursion preferences, you can inform them in advance; these will be considered by the guide at the time of passenger registration at Remota. Confirmation of them is subject to: passenger's physical conditions, ages of children if any, weather conditions, and availability





PINGO VALLEY

Full day | 8 Hours | High difficulty

It will take an hour and a half to reach the beginning of the trail. We'll walk through old forests, meadows and bushland to get to the Salmon Waterfall, walking along the Pingo River bank. The highlight of this excursion is arriving at the impressive Pingo Waterfall, running from the glacier with the same name. Throughout the walk you will spot an array of native birds. We will try our best to find the elusive Southern Deer or Huemul, a unique native and sadly an endangered species that inhabits the depths of the valleys and forests of Torres del Paine National Park.

CERRO CASTILLO HIKE

Full day | 8 Hours | High difficulty

After a 45 minute ride by van we will arrive at Cerro Castillo located in an old estancia called Complejo Torres del Paine, part of the 'Exploiting Society of Tierra del Fuego'. From there we will start our challenge to try and conquer the summit of Cerro Castillo. Here you will enjoy an amazing panoramic view of the province below. One of the most challenging excursions but at the same time rewarding of the Remota experience.

CERRO BENÍTEZ HIKE

Full day | 8 Hours | Medium / High difficulty

We will start our walk at the natural monument of the Cueva del Milodón (Cave of the Milodon). From here we will go deep into this area and start climbing to the summit of Cerro Benítez. From the summit you will be able to see Condors and Eagles as well as experience a panoramic view of Lake Sofía and the Patagonian Andes.

EXCURSIONS MENU

ADVENTURE PROGRAM

Important:

If you have excursion preferences, you can inform them in advance; these will be considered by the guide at the time of passenger registration at Remota. Confirmation of them is subject to: passenger's physical conditions, ages of children if any, weather conditions, and availability.





FRENCH VALLEY

Only available between November 01 to March 15

Full day | 8 Hours | Medium / High difficulty

We will board Hielos Patagónicos Catamaran in Pudeto. After around 30 minutes navigation on Lake Pehoe we will arrive at Paine Grande. From here we will start our hike toward the valley, surrounding Lake Skottsberg until we get to the Italian Camp. The climb to the viewpoint is sheltered by the Glacier El Francés, El Paine Grande and Los Cuernos, imposing rock formations and the heart of Torres del Paine.

HIKE TO PUERTO NATALES

Half day | 1 Hour and a half | Low difficulty

To understand how life unfolds in the Last Hope Province, it's necessary to delve into the history of Puerto Natales and its inhabitants: their character, customs, how it was built, among other things. We will visit various points of interest, such as the Fishermen's Wharf, the Municipal Museum, the Main Square, and its surroundings.

DAY OF PATAGONIAN RANCH

Full day | 8 Hours | Low difficulty

We leave Remota to visit the typical ranches of Chilean Patagonia (estancias), where the effort and character of the first settlers of these lands can be felt in the shearing sheds, and you can savor a delicious and traditional Patagonian lamb barbecue on a spit.

EXCURSIONS MENU

ADVENTURE PROGRAM

Important:

If you have excursion preferences, you can inform them in advance; these will be considered by the guide at the time of passenger registration at Remota. Confirmation of them is subject to: passenger's physical conditions, ages of children if any, weather conditions, and availability





THREE CAVES HIKE

Half day | 5 Hours | Low difficulty

We will visit the Small Cave, the Middle Cave, and the enormous Milodon Cave, home to the giant ground sloth that inhabited these lands over ten thousand years ago. The archaeological and cultural significance of this natural monument extends through the oldest human remains found in the region.

BENÍTEZ TREKKING

Half day | 5 Hours | Medium difficulty

In this excursion, we will try to reconstruct and relive the settlement of Patagonia, visiting the rock shelters formerly used by the Tehuelche people. Additionally, we will enjoy the perspective of Sofia Lake and the Sierra Senoret Valley.

TORRES DEL PAINE NATIONAL PARK

Full day | 8 Hours | Low difficulty

The perfect excursion to get an overall and comprehensive view of Torres del Paine National Park. We will visit Torres del Paine from one end to the other. Enjoy different viewpoints such as Laguna Amarga and Nordenskjöld Lake. In addition, we will take short walks to visit Salto Grande, Mirador Cuernos, and Mirador de los Hielos on the beach of Grey Lake. Lunch and entrance fees included.

EXCURSIONS MENU

ADVENTURE PROGRAM

Important:

If you have excursion preferences, you can inform them in advance; these will be considered by the guide at the time of passenger registration at Remota. Confirmation of them is subject to: passenger's physical conditions, ages of children if any, weather conditions, and availability.





TORRES DEL PAINE ACTIVE NATIONAL PARK

Full day | 8 Hours | Low / medium difficulty

Photographic safari through Torres del Paine. We focus our journey on the eastern side of the park, where most of the animals are found. We begin with Laguna Azul, a place visited by the first tourist expedition in the area, in which Lady Florence Dixie participated; it is also one of the best places to see the Towers. We will continue until we reach the Paine Waterfall. Later, after a 3-hour hike, we will have contact with the Guanacos throughout the pampas and visit a rocky shelter where some remains of indigenous rock paintings are found.

BALMACEDA AND SERRANO NAVIGATION

Full day | 8 Hours | Low difficulty

This journey replicates the one made by the expert Spanish pilot Juan Ladrilleros in 1557 when, with the last hope of finding the Strait of Magellan, he came across the glaciers of Mount Balmaceda. Setting sail from Puerto Natales, we will sail for 3 hours along the Last Hope Inlet towards Mount Balmaceda, located within the Bernardo O'Higgins National Park, the largest in our country. We will arrive at a port within the national park and take a short hike to get closer to the Serrano Glacier. On the way back, we will visit a ranch to enjoy a typical Patagonian lamb barbecue.

GREY LAKE NAVIGATION

Full day | 8 Hours | Low / medium difficulty

We will depart towards Torres del Paine National Park via the Serrano route, where we will visit the viewpoints of Lake Toro, the Cuernos, and Grey Glacier. We will then head to Lake Grey, where we will embark on a three-hour navigation towards Grey Glacier. You'll have the opportunity to enjoy an unparalleled landscape composed of floating icebergs, lush vegetation, and imposing mountains. From a very short distance, you'll be able to appreciate the beauty and magnitude of the ice walls, which are more than 20 meters high, that the glacier offers as a spectacle.

EXCURSIONS MENU

ADVENTURE PROGRAM

Important:

If you have excursion preferences, you can inform them in advance; these will be considered by the guide at the time of passenger registration at Remota. Confirmation of them is subject to: passenger's physical conditions, ages of children if any, weather conditions, and availability.

